

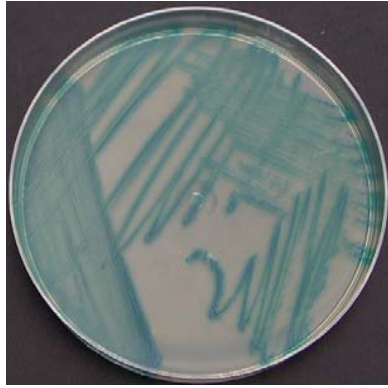


# Spectrum™ Culture System

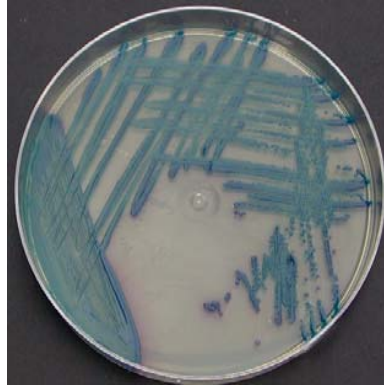
## Veterinary Interpretation Guide



**E. coli:** Medium size pink to red colonies.



**Enterococcus spp:** Pinpoint blue to turquoise colonies.



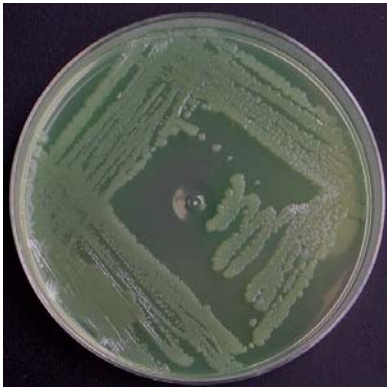
**Klebsiella, Enterobacter, Citrobacter, Serratia:** Metallic blue colonies with slight pink halo.



**Proteus mirabilis:** Clear to slightly orange colonies with diffusible brown pigment halo.



**Proteus vulgaris:** Medium to small blue-green colonies with diffusible yellow to green pigment.



**Pseudomonas aeruginosa:** Trans-parent white to green colonies with some diffusion into media.

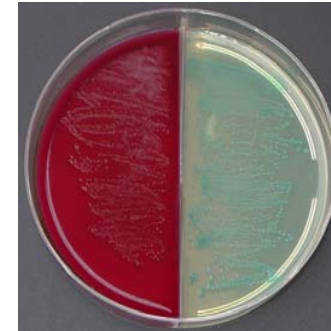


**Salmonella enteritidis:** White to beige colonies.

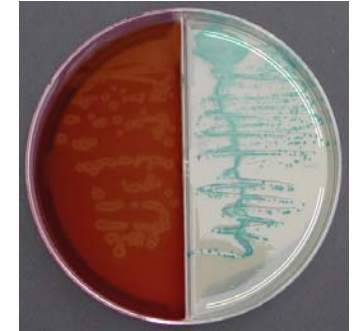


**Staphylococcus aureus:** White to light yellow small colonies. Some species may appear mauve.

### Spectrum-Plus with TSA Blood Agar



**Strep. agalactiae:** Light blue pin-like colonies. TSA/Blood: Small, white colonies with clear or green hemolysis.



**Strep. equi:** Light blue pin-like colonies. TSA/Blood: Small, colonies with clear zone of beta hemolysis.

#### Notes:

All organisms shown are in pure culture. Mixed cultures should be interpreted with caution. Spectrum agar is for veterinary use only and is intended as an aid in the identification of certain common pathogens. Presumptive results should be verified using traditional culture methods.

Reorder from:

Vetlab Supply (800)3301522  
Spectrum Agar: MCR-PLTSP100  
Spectrum Plus: MCR-PLTSP200