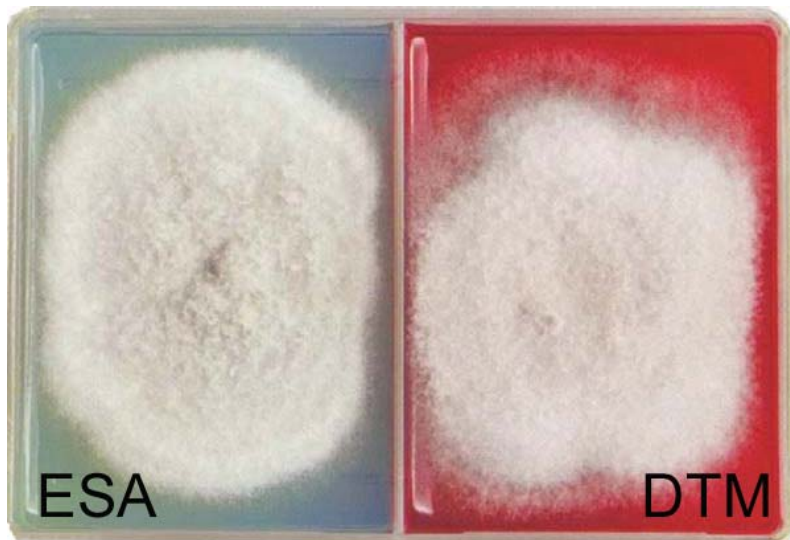


DermatoPlate[®]-Duo

Dermatophyte Culture System

Culturing for Dermatophytes (Ringworm) is a routine procedure in veterinary practice. While pathogenic fungi typically produce a color change that can suggest infection, microscopic examination is required for definitive diagnosis. The unique DermoPlate[®]-Duo dual chamber culture plate simplifies inoculation and sampling of growth. Specialized Enhanced Sporulation Agar (ESA) promotes the growth of diagnostic macroconidia.



- *Fully removable cover simplifies inoculation and sampling of fungal growth.*
- *Plates are individually wrapped in airtight pouch for extended shelf life.*
- *10 and economical 25 plate packaging.*
- *DermatoPlate S-Duo[™] with Sabaroud Dextrose Agar also available.*



www.vetlab.com

The #1 Choice of Veterinary Dermatologists*

DermatoPlate®-Duo Skin Culture Procedure



Gently pluck broken hairs and scale from periphery of skin lesion with a clean forceps or hemostat.



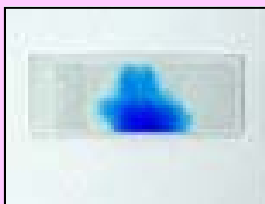
Distribute sample over both sides of DermatoPlate®-Duo pushing a few strands down into the agar. Incubate at room temperature.



Check plates daily for growth and color change. At first sign of growth perform microscopic exam. If no growth occurs after 14 days the culture is considered negative.



Place a drop of Lactophenol Cotton Blue stain on a slide and sample plate growth by gently touching with a Fung-Tape® loop. Wear gloves.



Carefully transfer the harvested sample to the slide and gently smooth Fung-Tape® over slide to spread stain evenly.



Examine slide under the microscope at 10X and 40X power for presence of characteristic micro- and macroconidia.

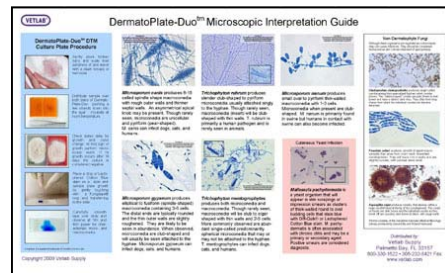
DermatoPlate®-Duo Ordering Information

- 7950-10 DermatoPlate® Duo (DTM/ESA¹) 10/pkg.
- 7950-25 DermatoPlate® Duo 25/pkg.
(Compare to Derm-Duet®)
- 7950S-10 DermatoPlate® S-Duo 10/pkg.
(DTM/Sabaroud-Dextrose)
- 7950S-25 DermatoPlate® S-Duo 25/pkg.
(Compare to Sab-Duet®)
- 7900-10 DermatoPlate® DTM 10/pkg.
- 7900-25 DermatoPlate® DTM 25/pkg.

Accessories

- 738682 DermatoPlate® Fungal Stain 30 ml.
(Lactophenol Cotton Blue)
- CR3330 DermatoPlate® Clearing Reagent 30 ml.
(10% KOH/DMSO)
- SDL745 Fungitape®; 300/roll
(Flexible adhesive wet mount coverslips)
- CULM13600 Disposable Toothbrush 24/Pkg.
- 79CHART Full Color Laminated Interpretation Guide

New! Complete DermatoPlate® starter system with (10) DermatoPlate® Duo™ plates, Fungi-Tape®, KOH Clearing Solution, Fungal Stain, instructions, and bonus color laminated interpretation chart.



Distributed exclusively by:

Vetlab Supply

"Tomorrow's Laboratory Solutions Today"

Palmetto Bay, FL 33157-5509

800.330.1522 • 305.232.8421 Fax

www.vetlab.com

* Dual plate DTM/ESA or DTM/Sabaroud

¹ Enhanced Sporulation Agar (ESA) promotes the growth of characteristic macroconidia that may allow for earlier confirmation of infection.

Derm-Duet and Sab-Duet are registered trademarks of Bacti-Lab, Inc. and Hardy Diagnostics.
Fungitape is a registered trademark of Scientific Device Laboratories